




Work Truck

Tech Specs



IdlePro® Alternators

System Voltage	12V
Temperature Rating	-40°C to 125°C
Diodes	12*
Lamp Driver	High or low side driver
Mounting	J180 Hinge Mount Pad Mount
Output	240-Amp
Rotation	Clockwise
Weight	22 lbs. / 10 kg
	3-Year/Unlimited Mileage**

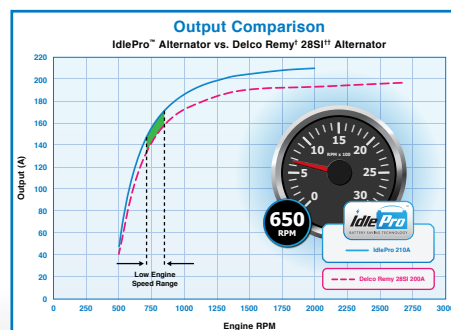


Additional Specifications

PRESTOLITE	VOLTS	AMPS	MOUNTING
A160210	12	170	PAD
A160211	12	170	J180
AVI2800J	12	190	J180
AVI2800P	12	190	PAD
A160207	12	210	PAD
A160208	12	210	J180
A160203	12	240	PAD
A160204	12	240	J180

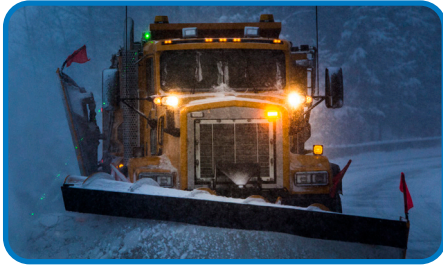
Output Curves

Vehicles that frequently stop and start, while also powering larger-than-usual electrical draws, require alternators that can ensure full battery recovery between stops, even if the vehicle never gets back up to full speed. The only important rating is the amount of power the alternator can produce while the engine is idling.



*Certain models **Check with your Prestolite representative for more details


*Delco Remy is a registered trademark of General Motors Corporation, licensed to BorgWarner PDS (Anderson) L.L.C. **28SI is a registered trademarks of BorgWarner.



Work Truck


Tech Specs

PowerPro Extreme® 5 Starters

Engine Size	Up to 10L
System Voltage	12V
Rotation	Clockwise
Mounting	SAE #1, SAE #3
Output	5kW
Flange	Fixed
Weight	21.5 lbs / 9.8 kg
Operating Temperature	-40°C to 125°C
	Work Truck Applications: 2-year/Unlimited Mileage**



Additional Specifications

LEECE-NEVILLE	DESCRIPTION	TEETH	OCP	WARRANTY
M95301H	Cummins ISC/ISL, International DT466, DT530, DT570, Maxx Force 9&10	12	No	 Work Truck Applications, 2-Year/ Unlimited Mileage
M95303H	Cummins ISB 6.7L	10	No	
M95307H	Cummins ISB 6.7L or applications needing additional ground stud	10	No	
M95309H	Detroit Diesel DD5 and DD8	11	No	
M95312H	Cummins ISC/ISL for applications needing additional ground stud	12	No	

** Check with your Prestolite representative for more details



Contact Your Sales Representative Today!
 400 Main St. • Arcade, NY 14009 • www.Prestolite.com

Learn more
 @PrestoliteElectric

